

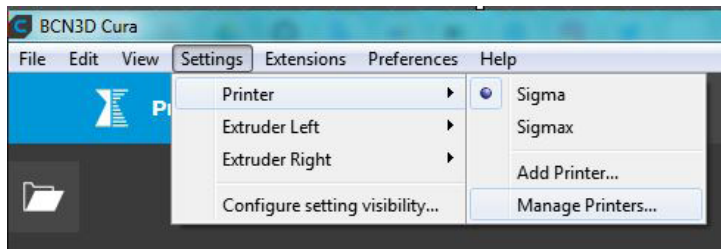
## **Technical manual**

How to update the firmware

## How to update the firmware

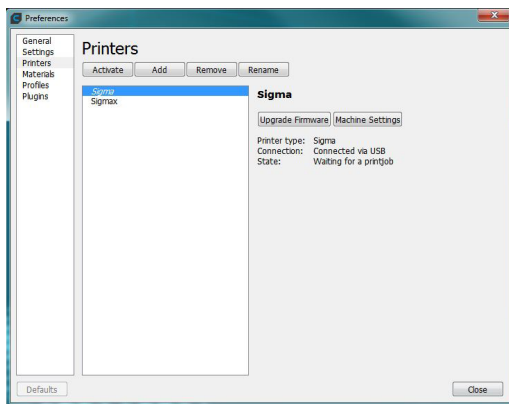
At BCN3D Technologies we want you to have a great printing experience, and to achieve this we are continually working to create new firmware upgrades for our printers. Follow this process through BCN3D Cura for checking if the latest firmware version is installed on your printer. If not, it will get the latest firmware and it will be installed.

1. Use the USB cable to connect the Sigma to the computer.
2. Open BCN3D Cura. Go to *Settings* --> *Printer* --> *Manage Printers*



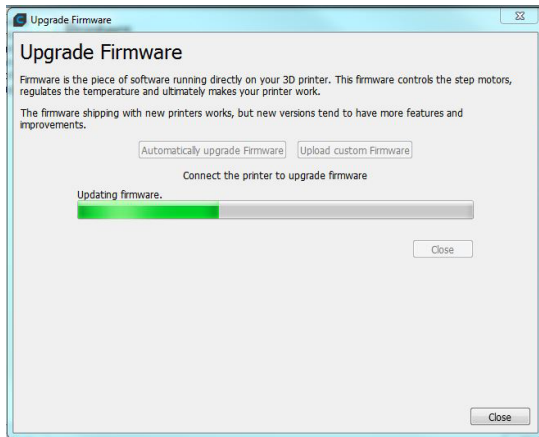
3. Select *Upgrade Firmware*.

4. Click *Automatically upgrade Firmware* to download and install the latest version available.

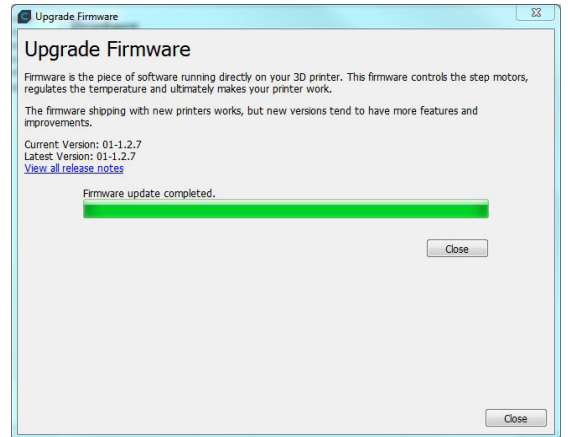


## How to update the firmware

5. Wait until the firmware is installed. The process may take a few minutes to complete.



6. Once the process is completed, close the window.





**BCN3D**